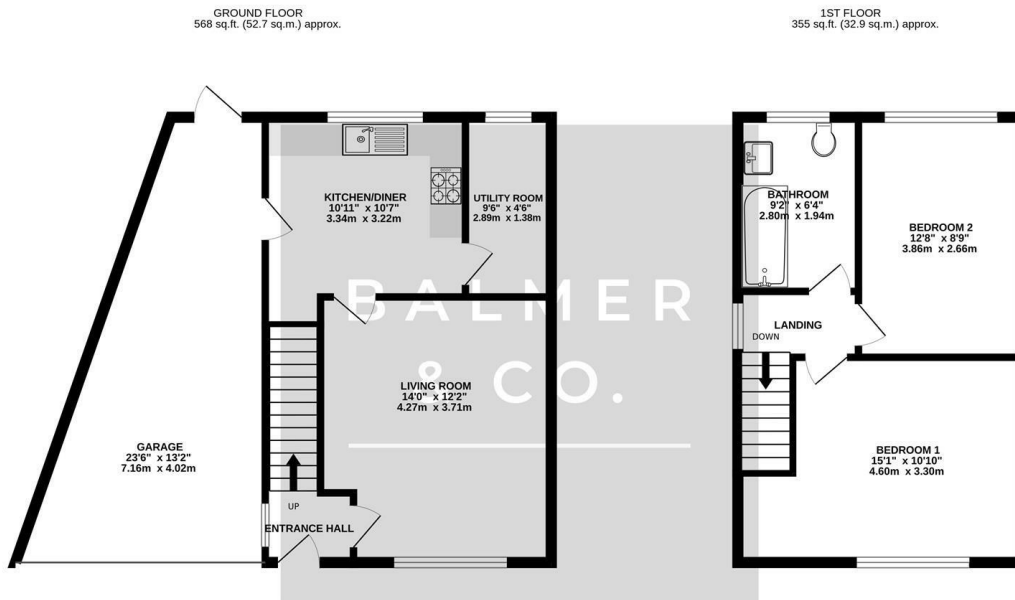


Laxey Crescent, Leigh, WN7 5HF
£150,000

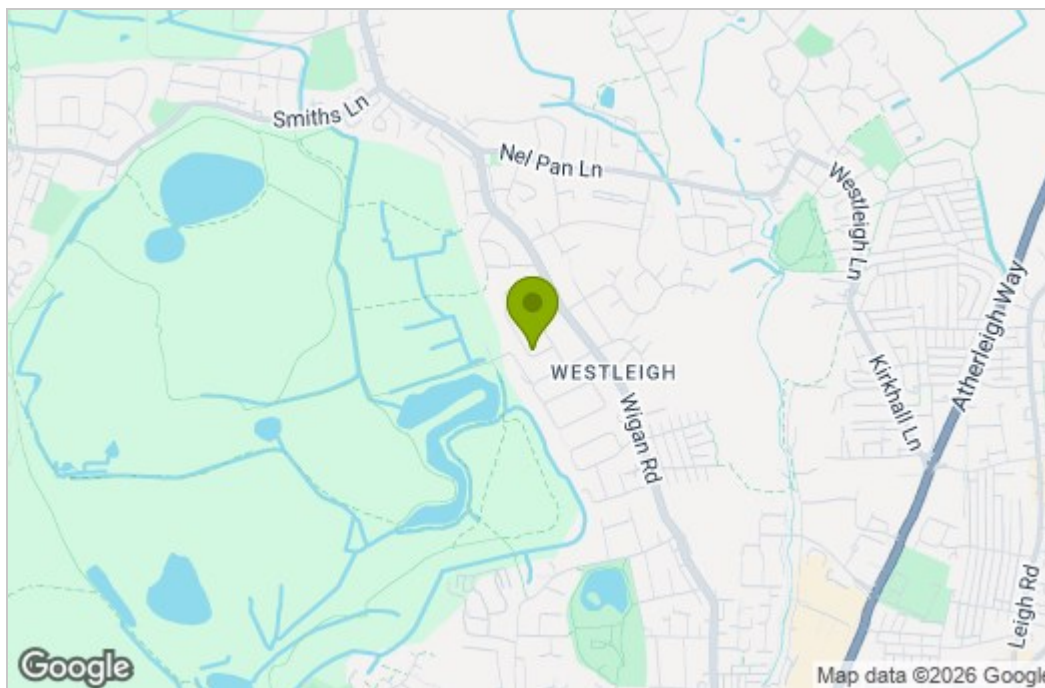


BALMER & CO in LEIGH are delighted to offer FOR SALE this fantastic two bedroom semi detached property located on Laxey Crescent in Leigh. Well presented throughout with a new kitchen and driveway parking it would make a perfect first time buy. The ground floor comprising in brief; entrance hallway, living room and a modern fitted kitchen with integrated fridge/freezer and separate utility room. To the first floor is a large master bedroom, a second double bedroom and a three piece family bathroom suite. A loft space with pull down ladder completes the internal accommodation. Externally, the property is garden fronted with a driveway leading to a car port with a roof and garage door. To the rear is an enclosed, low maintenance garden. Early viewings highly recommended, all enquiries welcome.

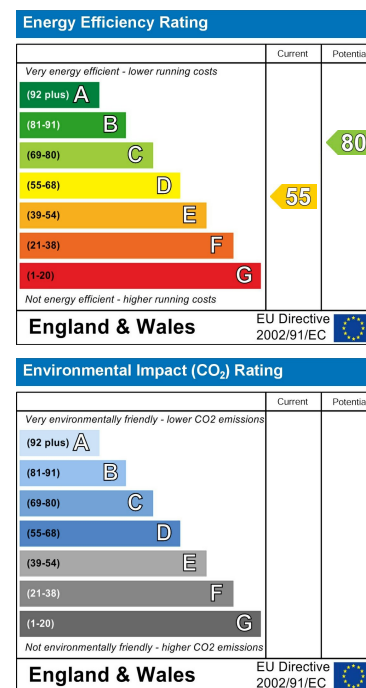
Floor Plan



Area Map



Energy Efficiency Graph



These particulars, whilst believed to be accurate are set out as a general outline only for guidance and do not constitute any part of an offer or contract. Intending purchasers should not rely on them as statements of representation of fact, but must satisfy themselves by inspection or otherwise as to their accuracy. No person in this firm's employment has the authority to make or give any representation or warranty in respect of the property.